



# MONTHLY MEMBERSHIP PROGRESS REPORT

District 105BN

Results as of: 3/31/2017

GMT: Ton Soeters

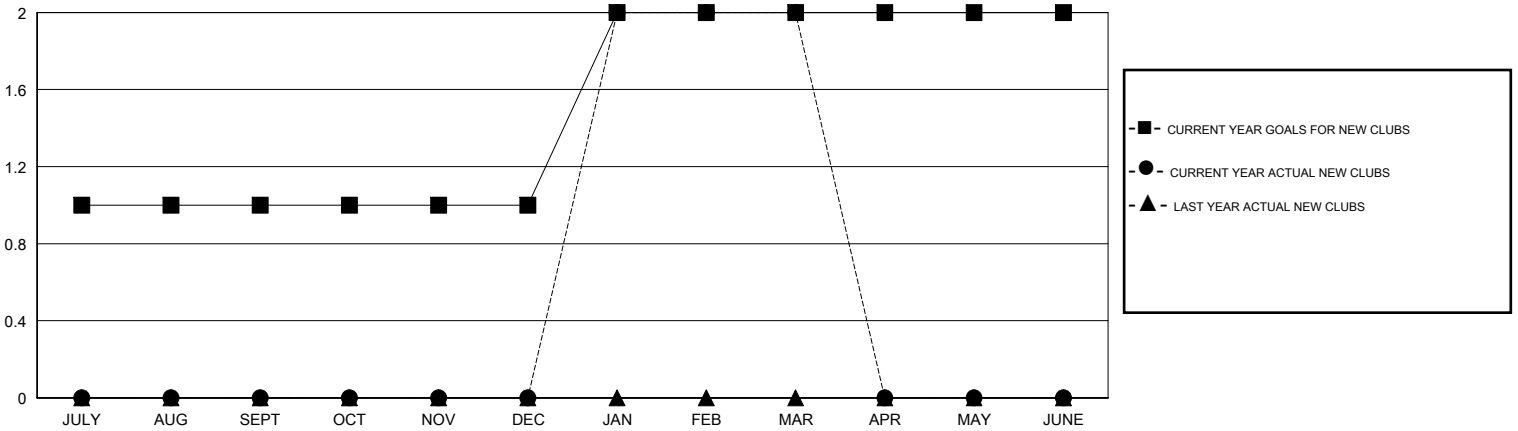
LOCATION ENGLAND

GMT CA

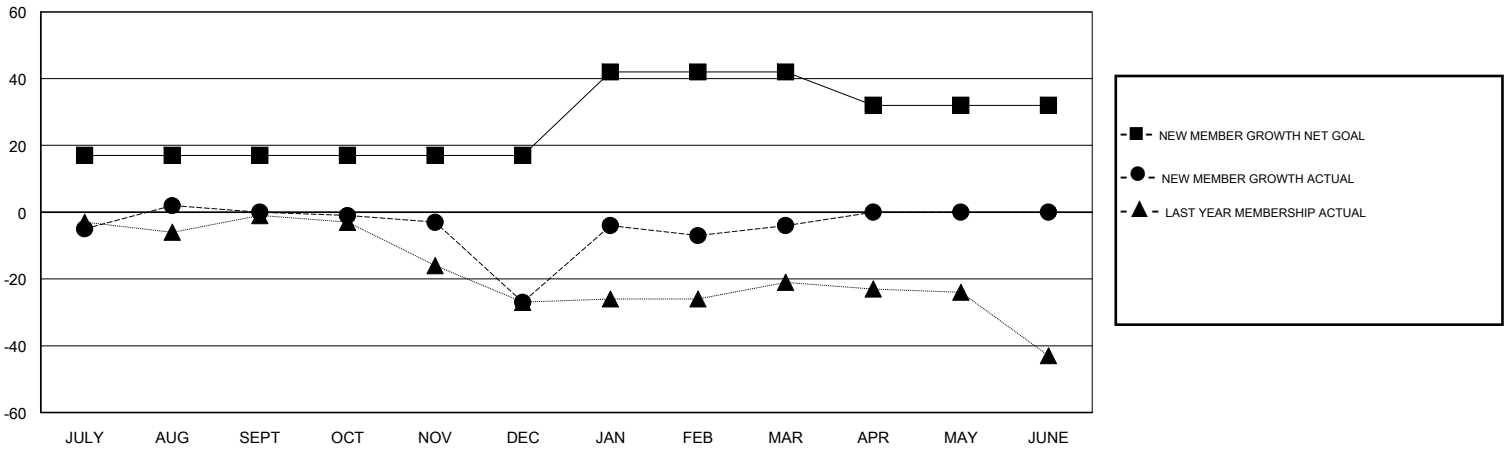
| Clubs                 |               |           |               |
|-----------------------|---------------|-----------|---------------|
| RESULTS FOR 2016-2017 |               |           |               |
| QUARTER               | NEW CLUB GOAL | NEW CLUBS | DROPPED CLUBS |
| JULY/AUG/SEPT         | 1             | 0         | 1             |
| OCT/NOV/DEC           | 0             | 0         | 1             |
| JAN/FEB/MAR           | 1             | 2         | 0             |
| APR/MAY/JUNE          | 0             | 0         | 0             |

| Members               |  |  |  |
|-----------------------|--|--|--|
| RESULTS FOR 2016-2017 |  |  |  |
| QUARTER               | NEW MEMBER GROWTH NET GOAL (not reinstated or transfers) | NEW MEMBER GROWTH ACTUAL (not reinstated or transfers) | DROPPED MEMBERS ACTUAL (including transfers) |
| JULY/AUG/SEPT         | 17   | 28   | 28   |
| OCT/NOV/DEC           | 0  | 13   | 40   |
| JAN/FEB/MAR           | 25   | 53   | 30   |
| APR/MAY/JUNE          | -10  | 0  | 0  |

GOALS AND ACTUAL NEW CLUBS CUMULATIVE



GOALS AND ACTUAL MEMBERS CUMULATIVE



|                        |   |                                    |
|------------------------|---|------------------------------------|
| DROPPED CLUBS: 2       | 24 CLUBS OF 50 ADDED 1 OR MORE NEW MEMBERS                | <b>GENDER DISTRIBUTION</b>         |
|                        |   | MALE 547 (70.67%)                  |
|                        |   | FEMALE 227 (29.33%)                |
| <b>DROPPED MEMBERS</b> | <a href="#">CLICK HERE FOR CUMULATIVE MEMBERSHIP DATA</a> | TOTAL FAMILY UNIT MEMBERS 118      |
| DECEASED 8             |   | FAMILY MEMBERS PAYING HALF DUES 63 |
| CLUB CANCELLED 2       |   |                                    |
| OTHER 88               |   |                                    |
| <b>TOTAL 98</b>        |   |                                    |